



WASH GEC

PRODUCT CATALOG 2026

INNOVATIVE LIGHTING
SOLUTIONS

● Premier Car Wash Lighting

● Best High-Lumen Lighting



☎ 847-323-8384

✉ kole.greffin@washgec.com

☎ 847-372-2456

✉ will.voisard@washgec.com

🌐 washgec.com

📍 Charlotte, NC, USA



1

ABOUT US

2

DIGITAL MENUS

3

LUMINOVA CONTROLLER

4

LUMINOVA LITE

5

WASH GEC WALL PACK

6

TUNNEL ARCH LIGHTING

8

VACUUM LIGHTING

9

BAY LIGHTING

10

WASH LIGHTS

11

PROJECTOR & WALL SCONCE

12

**EXPRESS INTERIOR &
DETAIL LIGHTING**

13

**STANDARD TERMS &
CONDITIONS**

ABOUT US



KOLE GREFFIN
FOUNDER & PRESIDENT

Kole has spent the past two years leading and scaling Wash GEC, overseeing both day-to-day operations and behind-the-scenes product development initiatives. Kole recently graduated from High Point University with a degree in Sales and Entrepreneurship and now works full time growing the business. Originally from the Chicago suburbs, he relocated to Charlotte seven years ago.

Who are We?

WASH GEC Inc. was founded in 2024 by Kole Greffin and Jeff Resmer, driven by the belief that the car wash industry deserves lighting products that are high-quality, durable, and truly innovative.

Our Goal

Our goal is to build strong, lasting partnerships with our customers—because without you, there is no WASH GEC.

Why Choose Us?

Our unwavering commitment to product excellence is at the core of WASH GEC's mission. We understand that the car wash industry is built on long-standing relationships and mutually beneficial partnerships. Even with the dramatic changes the industry has seen over the past decade, that foundation remains as important as ever.



Complete Lighting
Solutions



Trusted Waterproof
designs



Nationwide
Service Support



Innovation That
Works



DIGITAL MENUS

The customer experience begins the moment a vehicle enters your car wash site. Wash GEC's high-resolution digital menu boards immediately capture attention, showcasing wash packages, membership programs, and current promotions right at the point of sale and throughout the property. Easy to program and built for long-lasting durability, it's no surprise that more operators than ever are choosing Wash GEC's digital menu solutions.

WASH GEC 55" OUTDOOR DIGITAL MENU



- IP65-rated outdoor digital menu board built to withstand rain, heat, cold, and harsh weather conditions.
- 55" Full HD (1920 × 1080) display with 16:9 aspect ratio, 4000 cd/m² brightness, and 3000:1 contrast ratio.
- Wide 178° viewing angles with 16.1 million color support for vivid, high-impact visuals.
- Powered by Android 11 OS with RK3568 Quad-Core processor (up to 2.0GHz).
- Memory configuration: 4GB RAM and 32GB internal storage for smooth media playback.
- Built-in WiFi 6, LAN (RJ45), dual 10W speakers, plus HDMI, USB, and TF/SD connectivity.
- Supports remote content management systems, vertical or horizontal layout, and expandable peripheral integration.
- Available with 1-, 2-, or 3-year warranty.

WASH GEC 55" DOUBLE DIGITAL MENU

- High-resolution display supporting dynamic content playback.
- Compatible with advanced Information Publishing Systems for remote content management.
- Supports both vertical and horizontal screen orientations.
- Flexible network configuration: Fixed IP, DHCP, or Domain setup.
- Equipped with RJ45 wired and wireless internet connectivity.
- Expandable functionality with support for multi-touch, printer integration, scanner connection, barcode reader, POS machine, and more.
- Available with 1-, 2-, or 3-year warranty.



LUMINOVA CONTROLLER

The Luminova DMX controller offers precise and dynamic control of lighting fixtures, built with operator ease of use in mind. The intuitive drag-and-drop user interface makes it easy to set-up tunnel lighting, configure zones within the car wash tunnel, and create custom lighting scenes. The Luminova Controller seamlessly integrates into other car wash controllers, making the set up a breeze.

- Ethernet & Wireless Connectivity
- Drag-and-Drop Graphical User Interface
- Pre-Programmed lighting effects and scene customization
- Automates scheduling of special promotions and holiday themes.
- Cloud backup and syncing.



GRAPHICAL USER INTERFACE (GUI) FEATURES

Drag-and-Drop Layout

Effortlessly design and configure lighting zones by dragging lighting fixtures into place on a virtual map of your car wash layout

Scene creation

Build and customize scenes with simple drag-and-drop functionality, assigning different colors and effects to specific zones

Real-time preview

See the effects of your lighting setup in real time within the interface, allowing for instant adjustment and fine-tuning

Cloud Backup & Sync

Save your lighting configuration to the cloud for easy backup and restoration, as well as remote updates or modifications



LUMINOVA LITE

Dont have a large number of fixtures?

The Luminova Lite is our smaller option, giving you the ability to control upto 25 fixtures.

- Ethernet & Wireless Connectivity
- Drag-and-Drop Graphical User Interface
- Pre-Programmed lighting effects and scene customization
- Automates scheduling of special promotions and holiday themes.
- Cloud backup and syncing.



GRAPHICAL USER INTERFACE (GUI) FEATURES

Drag-and-Drop Layout

Effortlessly design and configure lighting zones by dragging lighting fixtures into place on a virtual map of your car wash layout

Scene creation

Build and customize scenes with simple drag-and-drop functionality, assigning different colors and effects to specific zones

Real-time preview

See the effects of your lighting setup in real time within the interface, allowing for instant adjustment and fine-tuning

Cloud Backup & Sync

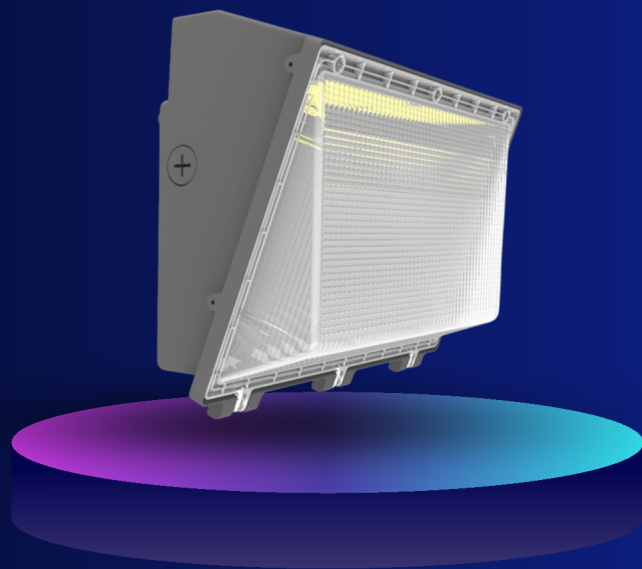
Save your lighting configuration to the cloud for easy backup and restoration, as well as remote updates or modifications



WASH GEC WALL PACK (WK05P)

The Wash GEC single-color wash light delivers high-quality lighting at an affordable price without compromising the customer show. This fixture is easy to install and can be bundled into a three-light immersive package.

- Selectable power and CCT options to meet varied customer needs and reduce inventory requirements.
- Standard respirator design extends fixture service life; side-mounted switches allow quick CCT, power, and light control adjustments.
- Optional emergency power supply for continued lighting during power outages.
- IP65-rated for complete protection against water and dust.
- Available with 120–277V or 120–347V power supply and 0–10V dimming.

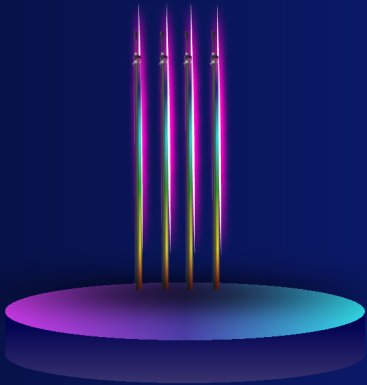


- Retains the traditional wall pack shape and installation method for quick and easy mounting.
- Sleek, functional design with patented aesthetics.
- Optically designed PC cover provides even light distribution with minimal dark spots (DLC Premium 5.1 compliant).
- High light-transmission, UV-resistant PC lampshade.
- Supports low-voltage light control sensor for safe and reliable operation.



TUNNEL ARCH LIGHTING

Wash GEC delivers innovative, durable, and vibrant lighting solutions designed to create the ultimate customer experience. Built to withstand wet and harsh environments, our chemically treated, robust products combine reliability with a striking “wow” factor.

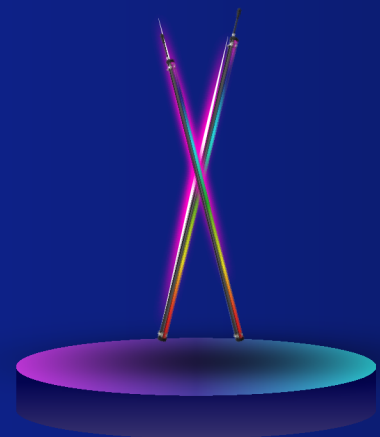


WASH GEC PRISM PLUS 2.0

- RGBW fixture available in 6 ft length.
- Suitable for use on all chemical application arches.
- Controlled via the Tuya app with over 30 special effects.
- Includes external power supply and stainless steel mounting hardware.
- IP67-rated for reliable performance in wet environments

WASH GEC PRISM ACCENT

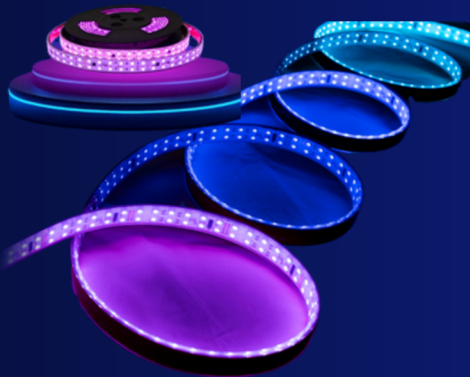
- RGBW fixture available in 6 ft and 8 ft lengths.
- For use on bay walls or ceilings
- DMX controlled special effects
- Daisy chain up to 10 fixtures on a single chain (#varies by size)
- Includes mounting hardware.
- IP67-rated for reliable performance in wet environments





TUNNEL ARCH LIGHTING

Wash GEC delivers innovative, durable, and vibrant lighting solutions designed to create the ultimate customer experience. Built to withstand wet and harsh environments, our chemically treated, robust products combine reliability with a striking “wow” factor.

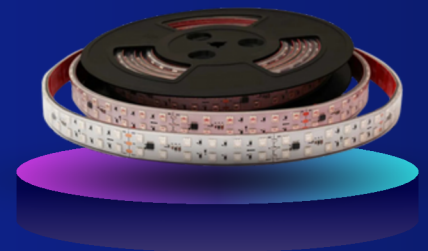


WASH GEC LED STRIP LIGHTS - RGB

- RGB fixture available in pre-cut 22ft length and custom sizes
- 30+ special effects controlled using the Tuya App
- External power supply and aluminum mounting channel included
- IP68 rating.

WASH GEC LED STRIP LIGHTS - SINGLE COLOR

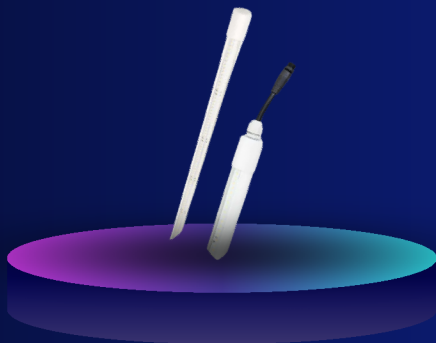
- Single color LED strip lights available in white, blue, red, green, purple, orange and yellow.
- 22ft pre-cut length or custom sizes
- Vibrant, immersive experience
- External power supply & aluminum mounting channel included
- IP68 rating





VACUUM LIGHTING

Why overpay for vacuum lights when you can get superior brightness and affordability in one place? Wash GEC's white vacuum lights deliver 200 lumens per watt, significantly enhancing visibility and safety on your car wash site. Discover why WASH GEC's vacuum lights are top-selling — try them today!



WASH GEC VACUUM LIGHT -WHITE

- Available in 6ft & 8ft lengths
- Superior brightness and affordability
- Fits into most OEM vacuum booms
- Bendable, driverless light that's easy to install.
- IP67 rating.



6FT - 9,000 LM | 8FT - 12,000 LM ULTRA-BRIGHT OUTPUT



IP67 WATERPROOF FOR WET ENVIRONMENTS



HIGH BRIGHTNESS, LOW COST



BENDABLE, DRIVER-FREE LED LIGHT — EASY TO INSTALL



BAY LIGHTING

Whether it's a full-on customer show using prism accent lighting or standard white lighting, WASH GEC has you covered. Choose from our prism accent or utility lights to brighten your tunnel, in-bay automatic, or self-serve bay.

WASH GEC UTILITY LIGHT

- Available in 6 ft & 8 ft lengths, daisy-chain up to 16 lights together (number varies by size and voltage).
- Driverless light for easy installation.
- Includes mounting hardware.
- 10 ft power cord and 1 ft lead also included.
- IP67-rated for reliable performance in wet environments.



Engineered for car wash bays, tunnels, and service zones, the waterproof T9 tube light delivers bright 5000K illumination with industrial-grade durability.



DELIVERS CRISP
5000K BRIGHT
WHITE
ILLUMINATION



IP67
WATERPROOF &
CHEMICAL-
RESISTANT BUILD



DAISY-CHAIN
DESIGN FOR EASY
LARGE-SCALE
INSTALLATION

WASH LIGHTS

SINGLE COLOR WASH LIGHTS

The Wash GEC single-color wash light delivers high-quality lighting at an affordable price without compromising the customer show. This fixture is easy to install and can be bundled into a three-light immersive package.

- High luminous efficiency with long operational lifespan
- Wide input voltage support (AC 120–277V)
- PC + aluminum housing with 94V0 fire resistance for effective heat dissipation
- Operates in extreme temperatures (-40°C to 40°C)
- 110° beam angle for wide, even light coverage
- IP67 waterproof rating for outdoor use
- 240 SMD3030 LEDs per 6 ft fixture
- RGB color output: Red, Green, and Blue wavelengths
- DC48V constant voltage design



RGB WASH LIGHTS

The Wash GEC RGB Wash Light delivers vibrant, full-color illumination with easy installation and durable, outdoor-ready IP67 protection. It includes a 2.4G RF remote for versatile color control and seamless coordination across multiple fixtures.

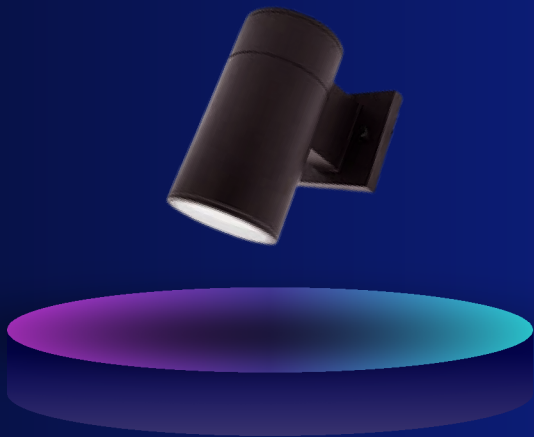
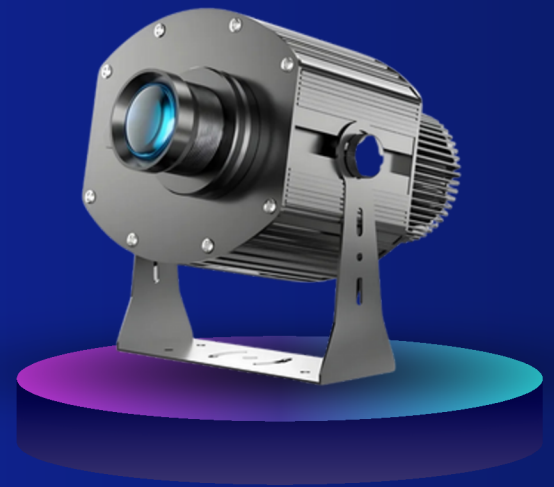


- High luminous efficiency and long working life.
- High efficiency LED Driver, the wide range input voltage AC120-277V
- PC+aluminum cooling design, 94V0 fire resistance, high quality and better cooling, operating temperature for -40~40°C.
- 110 degree luminous Angle .
- IP67 waterproof rating. Suitable for outdoor installation.

80W PROJECTOR & WALL SCONCE

80W PROJECTOR

- IP68 rated
- Easily customizable
- 8800 Lumens
- 6-layer high definition imaging lens
- High quality lamp beads, high brightness and low light decay.



WASH GEC WALL SCONCE

- Easily installation with no special training or special tools required.
- IP65 waterproof. Both indoor and outdoor use.
- ETL, cETL, CE, RoHS approval
- Designed for commercial and residential lighting applications.
- Theme lighting capable with red, green, blue and RGB.

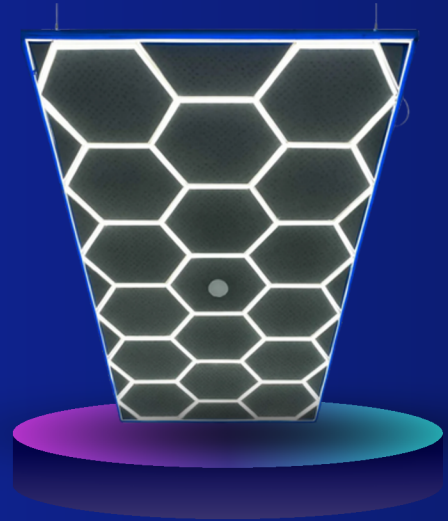


EXPRESS INTERIOR & DETAIL LIGHTING

Wash GEC is proud to offer sleek yet functional lighting solutions for both express interior tunnels and detail bays. With a variety of colors and design options, let Wash GEC recommend the right solution for your facility.

WASH GEC SPECIALITY LIGHTING

- Geared towards express interior tunnels and details bays
- Hex grids available in white, single color, * RGB color schemes
- 16ft * 8ft
- Proper mounting hardware included
- Call Wash GEC for additional design and size options.





STANDARD TERMS & CONDITIONS

WARRANTY

Wash GEC provides a standard two (2)-year warranty on all lighting products from the date of purchase. Digital signs come standard with a one (1)-year warranty, but two (2)- and three (3)-year extended warranties are available for an additional fee.

PAYMENT TERMS

Wash GEC currently accepts ACH, wire transfers, and credit card payments. Payment in full is required when the order is placed.

DIGITAL MENU LEADS

Digital menus typically have a lead time of eight weeks from the order date. Expedited air freight is available, resulting in a two-week lead time. Customers are responsible for expedited freight charges and must notify Wash GEC of any expedited shipping requests at the time of order.

LIGHTING LEAD TIMES

Lead time for in-stock lighting products is approximately two weeks. For larger orders or full lighting projects, Wash GEC recommends placing orders eight weeks in advance of the desired on-site delivery date. We appreciate your cooperation in helping us meet expected delivery timelines and provide a first-class customer experience.